

# MAKKAH

EXPERIENCE SWISS HOSPITALITY  
IN THE HEART OF MAKKAH WITH  
DIRECT ACCESS TO THE MASJID AL  
HARAM AND PANORAMIC VIEWS  
OF BOTH THE CITY AND THE KAABA

## Swissôtel Makkah

King Abdul Aziz Endowment, Ajyad Street, Makkah, Saudi Arabia  
Tel +966 12 5718000 Fax +966 12 5718111  
makkah@swissotel.com www.swissotel.com/makkah

مكة سويس أوتيل  
swissôtel MAKKAH

## LOCATION

### WORLD CLASS COMFORT

Beautiful views await you outside our door, while contemporary Swiss design can be found within. You'll find that our service is efficient, but also intuitive, charming and warm, bringing together the best of Alpine style with the rich, hospitable values of Arab culture. As part of the prestigious Abraj Al Bait complex, Swissôtel Makkah is located close to the holy Masjid Al Haraam, overlooking the Kaaba, as well as the entire Masjid. We are also the only distinctive hotel within the prestigious Abraj Al Bait Complex with a dedicated private entrance through Ajyad Street, making it easy for pilgrims to reach the Masjid Al Haram. The views of the city and decidedly contemporary details of the 1,487 guest rooms, 2 in-house restaurants and business centre make Swissôtel Makkah the ideal place to do business, or simply relax with your family in the holy city.



## GUEST ROOMS

### STYLISH SPACE TO UNWIND

Our 1,487 guest rooms and suites range from 32 to 64 square metres in size. Enter our rooms and you will step directly into a restful environment, since a vast number of the rooms overlook the Haram and Kaaba. Infused with contemporary Arabian culture you will find everything you need to relax or work from a large flexible desk and WiFi through to a comfortable bed and crisp white Swissôtel signature sheets. Winners of the 2014 and 2015 TripAdvisor #1 Family Hotel in Saudi Arabia award, we offer specially decorated rooms for families and children.

## RESTAURANTS

### ENJOY LOCAL DISHES IN A GLOBAL MEETING PLACE

Delicious food, freshly brewed Arabian coffee and views over the holy city will get your day off to a good start. Our in-house chefs offer an array of mouth-watering seasonal specialties. Savour international flavours and fine dining at the Signature restaurant selection. Or visit Al Ruwad Tea Lounge and enjoy the casual dining ambience. Choose from traditional and international cuisine, with plenty of delicious treats to suit every palate.



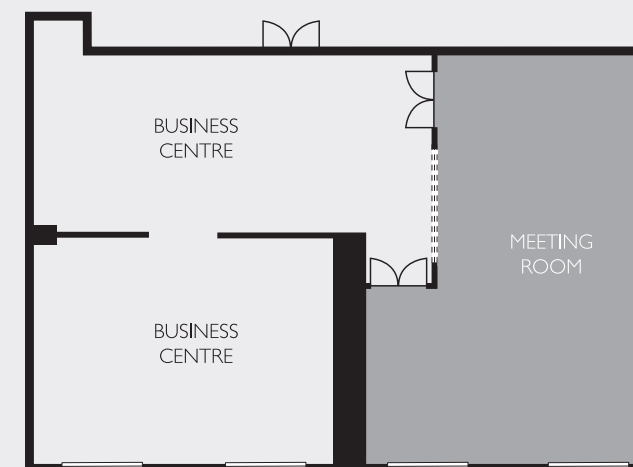
## BUSINESS CENTRE

### FOR ALL YOUR BUSINESS NEEDS

Everything you need to conduct your business remotely and effectively. The space includes a waiting area as well as six internet stations. There is also one meeting room (32 square metres). Services include high-speed internet, photocopying, typing, faxing, binding, translation, secretarial services and printing.

## CAPACITY CHART

MEETING ROOMS	AREA M²	L	W	H	BOARD ROOM	LEGEND
Meeting Room	32	9.5	6.6	3	14	<div>Meeting Room</div> <div>Window</div> <div>Moveable Partition</div>



## FACILITIES & SERVICES

### SWISSÔTEL MAKKAH HIGHLIGHTS

- Centrally located 5-star hotel
- 1,487 beautiful and contemporary rooms and suites
- 90 minute drive from Jeddah Airport
- Limousine transfer service
- 2 in-house restaurants
- Located in the prestigious Abraj Al Bait complex, overlooking the Masjid Al Haraam
- Business centre
- High speed W-Lan internet access in all areas of the hotel (charges apply)
- Valet parking
- Laundry service
- Dedicated check-in and check-out counters for Swissôtel Circle members
- 24-hour in room dining
- 24-hour concierge service

